



sensors



an Open Access Journal by MDPI

Automated Guided Vehicle Integrated with Collaborative Robot

Guest Editors:

Dr. Adam Ziębiński

Faculty of Automatic Control,
Electronics and Computer
Science, Department of
Distributed Systems and
Informatics Devices, Silesian
University of Technology, Gliwice,
Poland

adam.ziebinski@polsl.pl

Dr. Erik Kyrkjebø

Department of Engineering
Cybernetics, Western Norway
University of Applied Sciences,
Bergen, Norway

erik.kyrkjebo@hvl.no

Prof. Dr. Daniel Großmann

Technische Hochschule
Ingolstadt, Ingolstadt, Germany

daniel.grossmann@thi.de

Deadline for manuscript
submissions:

30 September 2022

Message from the Guest Editors

Dear Colleagues,

The use of collaborative robots in industry is increasing. However, they are often used as stationary robots fixed to permanent assembly stations. Using collaborative robots at different locations in the production cycle can lead to increased production efficiency in bottlenecks as needed. An Automated Guided Vehicle can be used to move the robot to the assembly station with the highest need for robot handling, but such solutions require additional sensors for the AGVs to move the robot safely between assembly stations. In addition, once the robot has relocated, it must be adapted and positioned accurately to the new assembly station to perform its tasks safely and accurately. The collaborative robot should also be able to cooperate safely with staff and machines at the new assembly station.

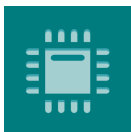
Therefore, it is necessary to develop new and improved methods for integrating collaborative robots with AGVs and the necessary sensor systems.

The purpose of this Special Issue is to contribute to the state of the art in the field of Automated Guided Vehicles integrated with collaborative robots.



mdpi.com/si/111796

Special Issue



sensors



an Open Access Journal by MDPI

Editor-in-Chief

Prof. Dr. Vittorio M.N. Passaro

Dipartimento di Ingegneria
Elettrica e dell'Informazione
(Department of Electrical and
Information Engineering),
Politecnico di Bari, Via Edoardo
Orabona n. 4, 70125 Bari, Italy

Message from the Editor-in-Chief

Sensors is a leading journal devoted to fast publication of the latest achievements of technological developments and scientific research in the huge area of physical, chemical and biochemical sensors, including remote sensing and sensor networks. Both experimental and theoretical papers are published, including all aspects of sensor design, technology, proof of concept and application. *Sensors* organizes Special Issues devoted to specific sensing areas and applications each year.

Author Benefits

Open Access :— free for readers, with [article processing charges \(APC\)](#) paid by authors or their institutions.

High Visibility: indexed within [Scopus](#), [SCIE \(Web of Science\)](#), [PubMed](#), [MEDLINE](#), [PMC](#), [Embase](#), [Ei Compendex](#), [Inspec](#), and many [other databases](#).

Journal Rank: [JCR](#) - Q1 (*Instruments & Instrumentation*) / [CiteScore](#) - Q1 (*Instrumentation*)

Contact Us

Sensors
MDPI, St. Alban-Anlage 66
4052 Basel, Switzerland

Tel: +41 61 683 77 34
www.mdpi.com

mdpi.com/journal/sensors
sensors@mdpi.com
🐦 [@Sensors_MDPI](#)